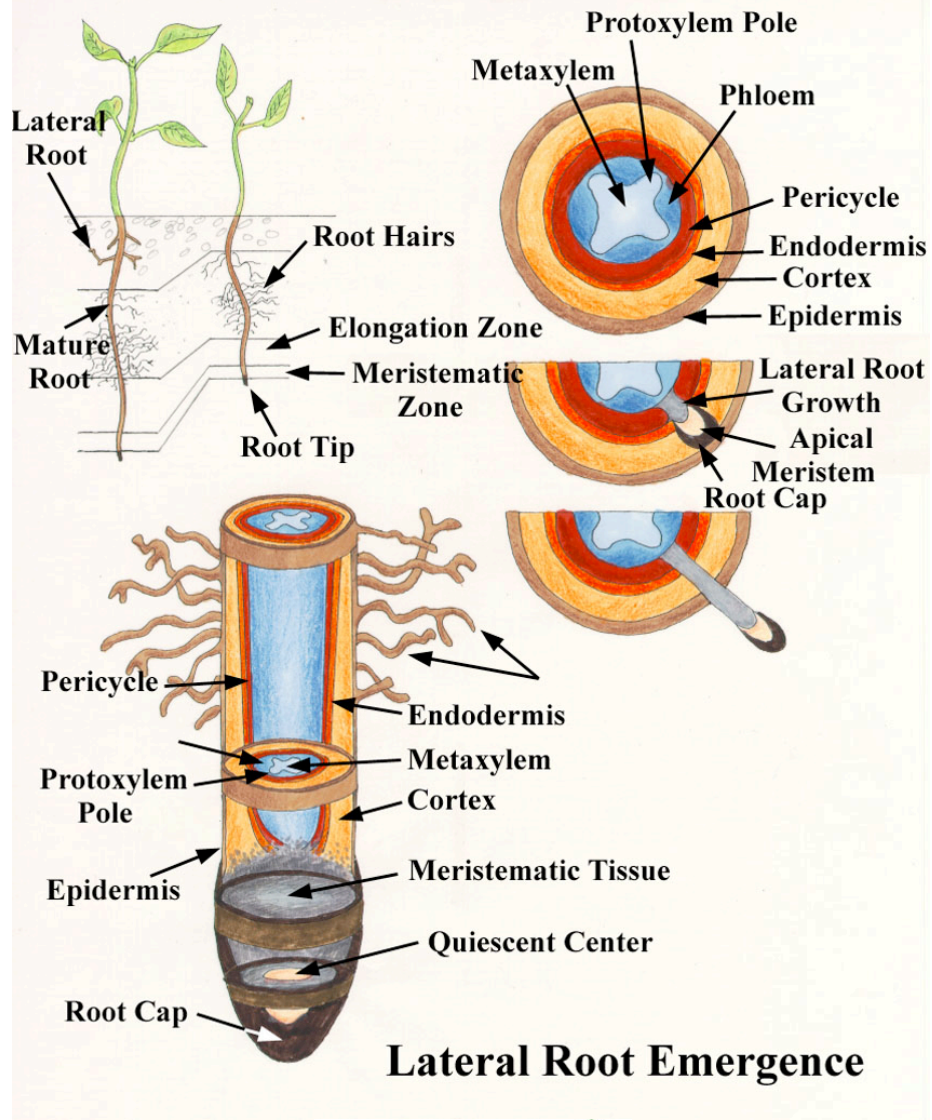


SBI3U	Plant Anatomy
Plants: Anatomy, Growth and Functions	

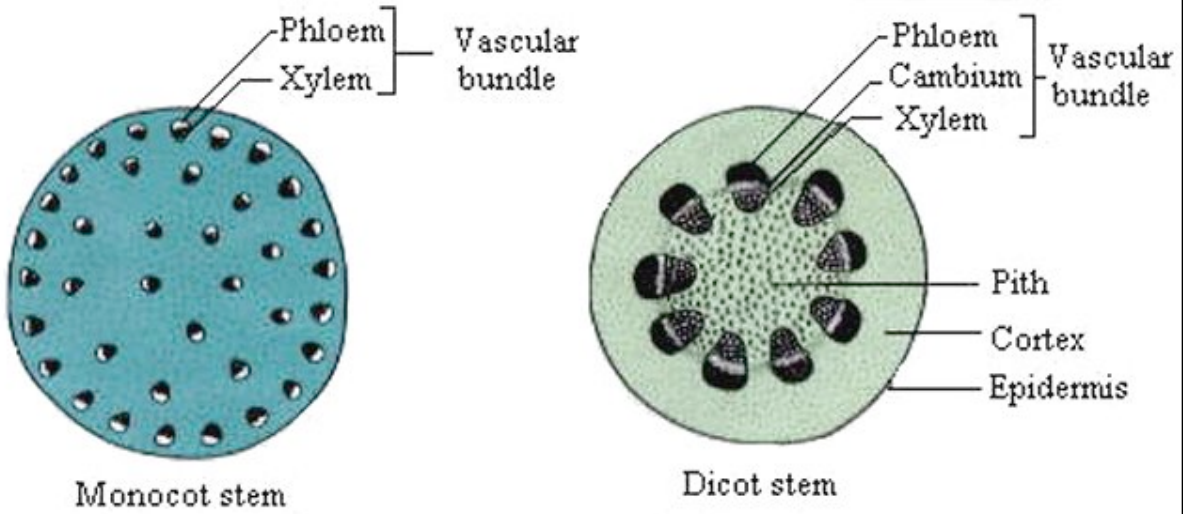
Tissue Systems	Description
1. Meristematic Tissue	Growth
1. Dermal Tissue	Protection
1. Vascular Tissue	Transport
1. Ground Tissue	Storage and support

Plants consists of (1) A. root - below ground, & (2) shoot - above ground: B. stems & C. leaves

Plant Organ	Function	Structure
A. Root		



A. Stem



A. Leaves

--	--	--

